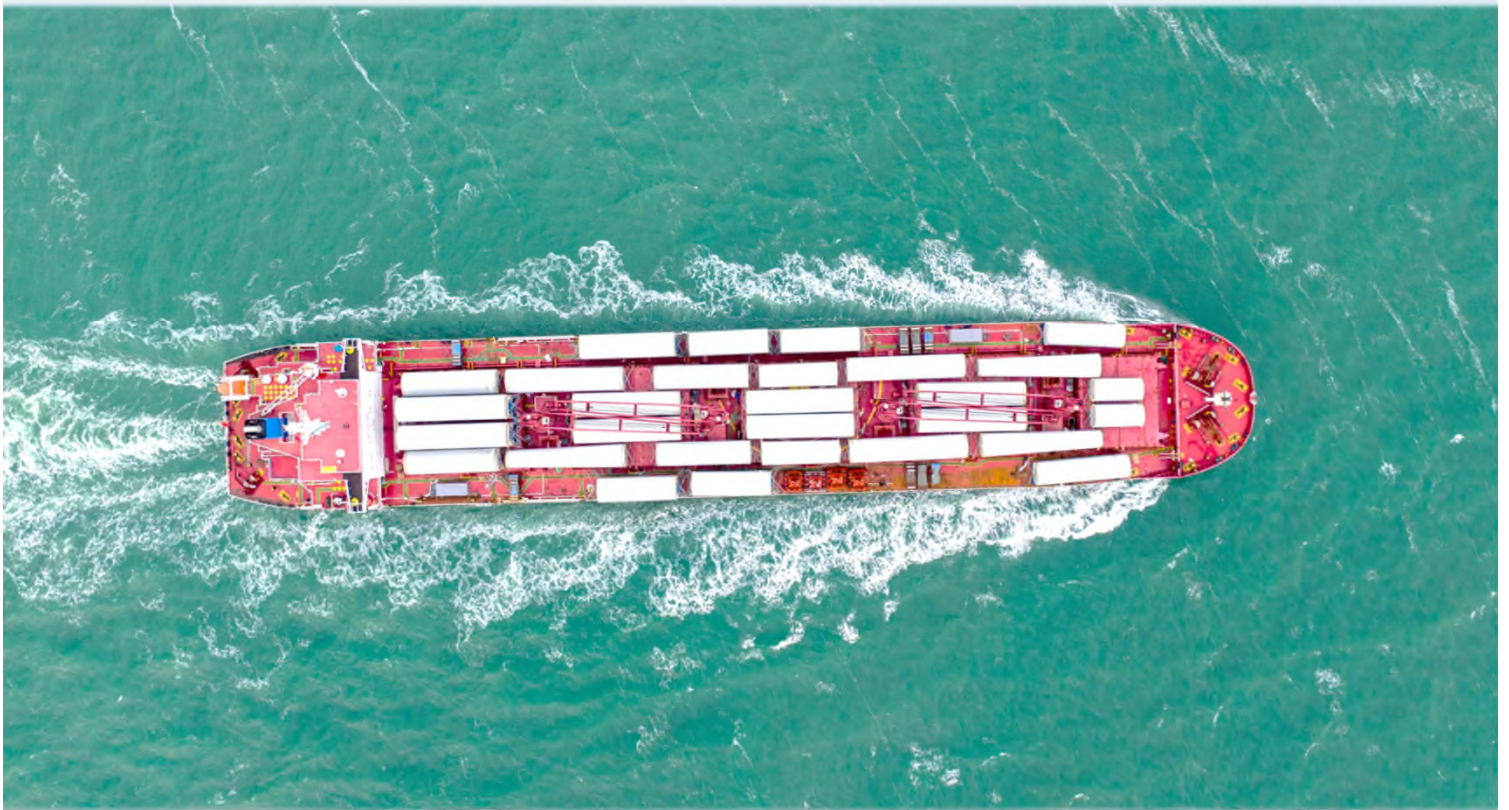


*P*roject *A*nd *C*oncept *C*arrier



*Growing a business with purpose,
by creating value for our customers.*





Our Roots



KUOK GROUP

The **Kuok Group** was founded in 1949 in Malaysia. Today, it is an Asian multinational with operations in six continents in a wide variety of sectors including Properties, Hospitality, Maritime, Logistics, Food and Agribusinesses.

Properties



Philanthropy



Hospitality



Logistics



Digital Infrastructure



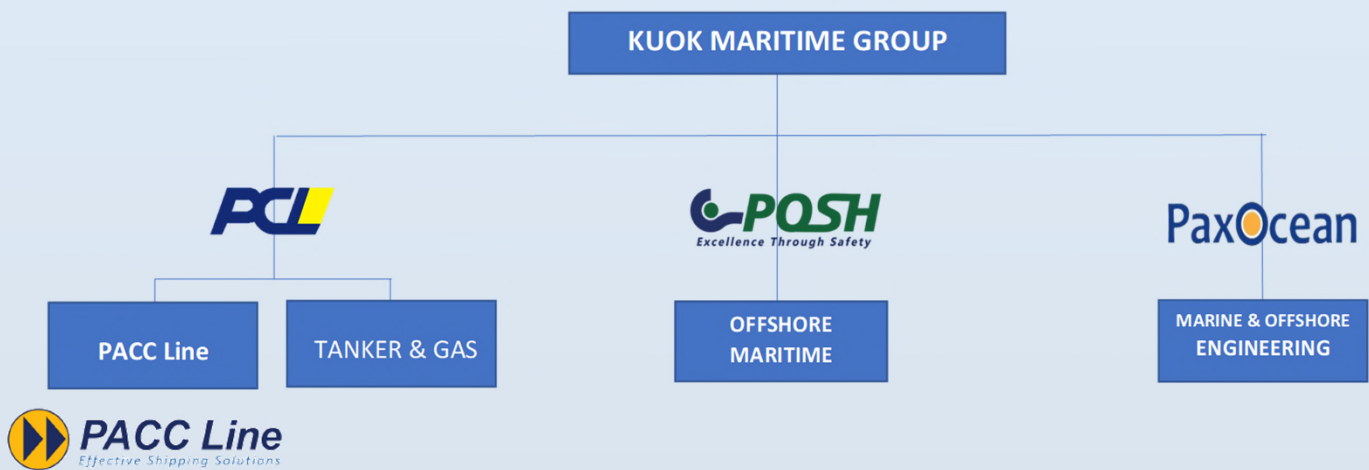
Agribusiness



Kuok Maritime Group (KMG)



BUILDING ON OUR LEGACY FOR SUCCESS. INNOVATING FOR THE FUTURE.



Who We Are

A major part of Kuok (Singapore) Limited is its holdings in various maritime industries. The Group have significant interests in both traditional shipping – dry bulk, breakbulk and projects & tankers and gas carriers, including other aspects of the maritime industry, like offshore marine services and marine & offshore engineering.

The Group is actively involved in ship owning, chartering, freight trading and providing ship management and commercial management services to its clients.

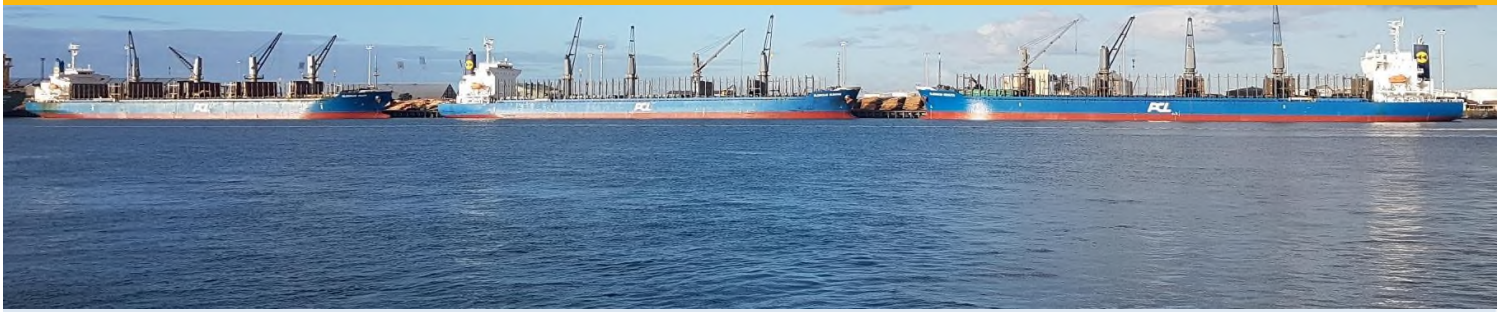
Pacific Carriers Limited (PCL) was incorporated in Singapore in 1973 and is a wholly-owned subsidiary of Kuok (Singapore) Limited. Over the years, **PCL** has established itself as a global player in the shipping industry as owner, manager and operator of large fleet of vessels comprising dry bulk, product tankers, gas carriers and multipurpose.

PACC Line was established in 1997 and is the specialist parcel, project and liner division of **PCL**. Today, it operates a global break-bulk, project and parcel service that caters to the special needs of our customers.

PACC Line also provides a semi-liner service between South-East Asia to the US Atlantic and Gulf coast and Europe as a regular and reliable alternative to containerized shipping. Similar sailings are offered on a wider trade coverage too with a global scale and with a wide commodity mix.

PCL and **PACC Line** are committed to building lasting partnerships with our customers. Our track record of value creation and service excellence has made us the go-to service provider for our customers over the past two decades

Assets & Service



A Diverse Fleet & Offering

We control and operate a large pool of around 65 vessels a year, across a diverse asset class base, both owned and chartered giving us the flexibility to better service our customers.

Our business is divided into 3 verticals.

PABX - PACC Line runs a semi-liner service from SEA to the US and Europe with a fleet of 8 owned triple deck **MPV** vessels supported by a pool of chartered in tonnage. This service has been operational for over 2 decades and has long standing partners. The Europe service was launched in 2019.

GPPS - Global Project & Parcelling Service, offers customised sailings on global trade lanes, working combinations of various cargo mixes focused on breakbulk, minor bulks and projects. This service delivers on handy to Kamsarmax's asset class.

Bulk & COA – Dedicated and focussed on general bulk trades, industrial carriage and COA's.



MPV



Handy



Supra & Ultras



Panamax & Kamsar



Global Coverage



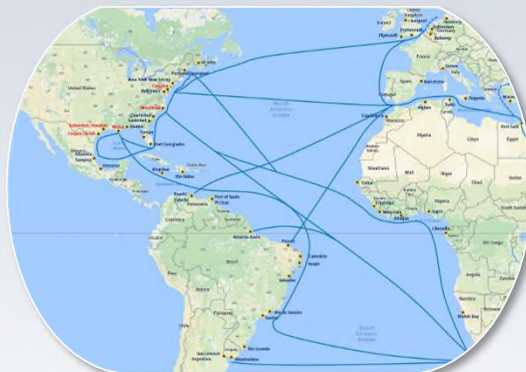
Asia Outbound

- SEA / India / PG → US EC/Gulf & Caribbean Sea
- China / Far East → N. America (Trans Pac)
- Far East / S. China → S.E. Asia & India Sub Con.
- China / SEA / India → Black Sea/Med/Conti
- China / SEA → EC SA / W.Africa
- **Cargo** : Break-bulk, Unitized, Minor Bulks, DG Cargo, Containers, Structural, Wind Projects, etc..

Asia Inbound

- US Gulf & East Coast → Far East to S. China range (Pan Can)
- US Gulf & East Coast → S.E. Asia / India / PG (Cape)
- EC S. America to SEA → China range
- Cont. / Med → India to China range

Cargo : Bulk (Agri, Energy, Fertilisers), Yachts, Projects, Projects, Steel, DG Cargo, O&G, Equipment, Containers



Atlantic Trade

- USG & USEC → Conti / Med.
- S. America → Europe / Med / Africa.
- Med → America's

Cargo : Bulk, Projects, Break- bulk, Unitized, Minor Bulks, DG Cargo, Containers



Bulk

Worldwide Transportation Provider

PCL and PACC Line services worldwide transportation of all dry bulk cargoes such as coal, iron/nickel ore, grain, alumina, cement clinker, palm kernel expellers, fertilizers and ferrous metals.

Our modern and diverse fleet of vessels are managed to the highest standards demanded by our customers ensuring reliability and timely delivery of cargo.

We continue to look for ways to modern technology to minimize our carbon footprint.

Delivering Exceptional Service Quality

- Fertilizers - Urea, DAP, Sulphur, Chemicals...
- Grain - Corn, Soybean, Wheat HSS, Meal, DDGS...
- Petcoke, Coal, Ores & Concentrates, Nickel, Copper...
- Forestry - Logs, Timber, Wood pellets, plywood..
- Soda Ash, Alumina, Alumina Hydrate...



Alumina



Sugar



Grain





Wind Energy

***PACC Line** has built a strong track record in the wind energy sector and has serviced most of the key players in this space for the past 15 years, delivering sophisticated, high value clean energy equipment around the world. Our experienced commercial and operational teams are committed to ensure that every voyage we embark on is thoroughly planned and executed.*

Over the years, our track record for shipping cargo safely and reliably has resulted in us being chosen as the preferred carrier for many shippers in this sector.

***PACC Line** has shipped over 3,100 sets of windmill towers and over 5,600 blades around the world safely and will continue to service the ever-growing transportation needs of our clients offering them, 'Effective Shipping Solutions'.*





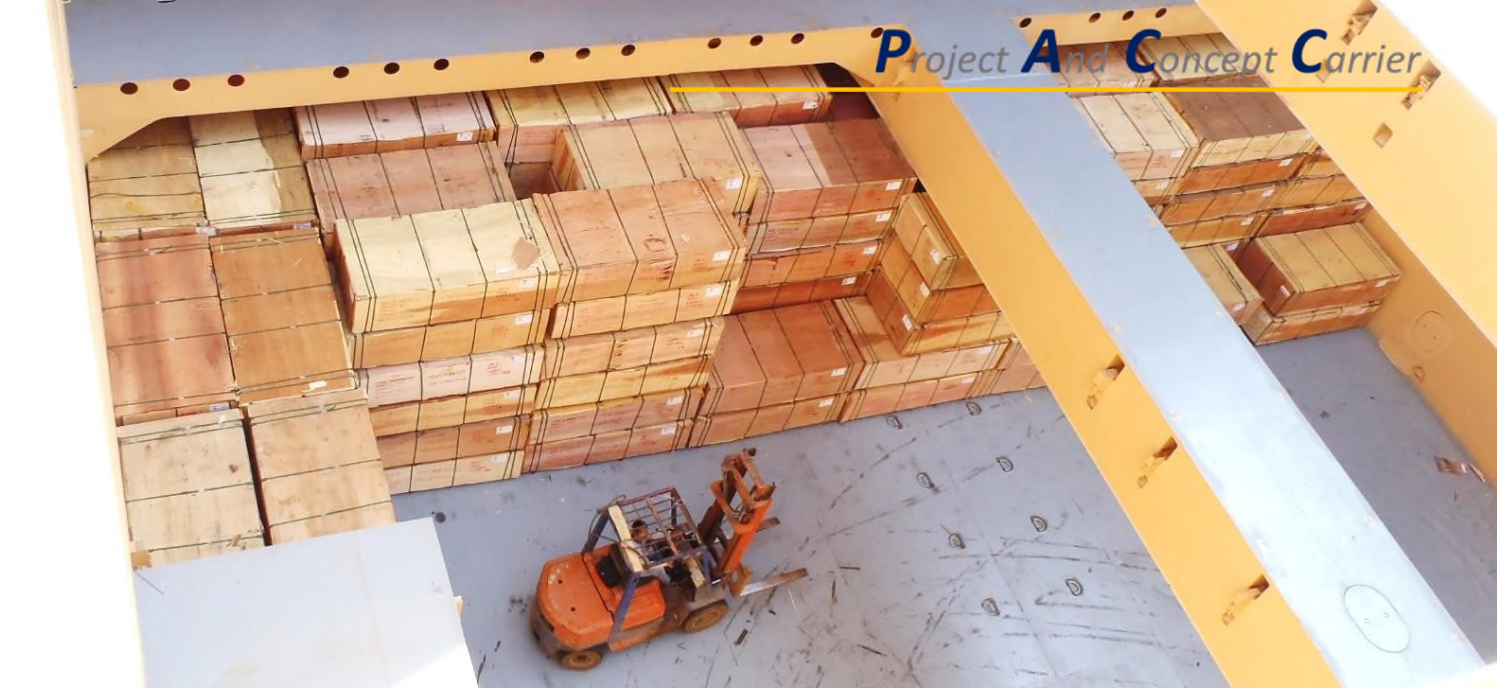
Natural Rubber

***PACC Line** is the largest carrier of Natural Rubber in the break-bulk mode from SE Asia to the West. Our service to the US has been successfully running for over 2 decades. To support this trade, we built a fleet of specialized vessels that were designed around the Metal Basket in which this commodity is shipped. It's one of the classic examples of how we collaborate with industry players to understand a problem and find them a long and lasting solution. Our knowledge and insights into this business with all the experience make us the go to partner for the tyre industry.*

In 2019, we started to expand this trade to the Mediterranean and the Continent at the request of our key clients, today we have established a monthly sailing in this direction and are working to expand it. It has been an excellent case of collaboration between our customers and our commercial & operations teams, again working to overcome tough obstacles and realize a service that has not been done for well over 2 decades.

It's opportunities of such nature that excite our team and bring our best qualities of problem solving to the table.





Plywood

***PACC Line** has established itself as the largest carrier of Plywood in breakbulk from SE. Asia to the Americas, offering our clients 2-3 sailings a month in this direction. This has been one of our fast-growing businesses and we have expanded our activity to cover Indonesia, Malaysia, Vietnam and Thailand on the origin side. We have historically largely focused on the North American market however at the behest of our customers we are looking into new market in Europe and the Middle East.*

We cover a large portfolio of major players in this sector from the mills in SE. Asia to key traders and also serving direct buyers in the West. Our focus has always been one that is centered around building long lasting value for our customers and through that, great partnerships.

Our strong network of Port Captains and Operations Managers at the load and discharge area value adds to this business. The years of experience we have in this trade gave us a strong advantage and position us in a comfortable placing from where we can focus on offering our customers a reliable and regular quality service.



Paper Rolls



Care and Precision

PACC Line, have over the years established itself as a trusted provider in the safe, efficient transportation of paper rolls, a well known sensitive yet high-valued cargo. Our specialized knowledge in cargo handling, customized stowage solutions, and advanced securing techniques ensures that every shipment is delivered with the utmost care and precision.

Backed by a highly skilled operations team and strong partnerships across the supply chain, we provide seamless, reliable, and cost-effective shipping solutions tailored to the unique needs of paper manufacturers and distributors





Steels and Metals

PACC Line has a wide and sound experience in the carriage of steel and metal cargoes. Our team of experience Captains in the office, at ports and onboard our vessels help to set a high standard, covering the pre-planning, loading, securing and discharge operations.

We have strong relationships with steel mills, metal producers and major traders. Our wide fleet capability helps us position the most suitable vessel for this cargo. Most important is our capability to service customers with the need to ship small volumes on unique trade lanes, this is done on our parcel service.

Continuous training is a key aspect of our service as we strongly believe in improving our understanding of all nuances in new trades or commodities.





Bagged Cargo

PACC Line has focused on offering customers customized sailings on our Parcel Service. Our agile and sharp team is able to put together sailings with a combination of various small cargo lots.

One of our growing cargo base are those that are shipped in jumbo bags. This covers a broad commodity base from food grade starch, select grain, fertilizers, chemicals, resins, grain, seeds and other similar commodities.

This is a unique trade and does require a strong team to support this operation to ensure a good safe turnaround at the discharge port.

Close supervision at the load and discharge ports help us pick and correct issues at an early stage thus avoiding damages and claims. Most important is our ability to mix and match cargoes in-order to manage a competitive freight offering to our customers.





Accommodation Units and Special Container's.

***PACC Line** has focused on offering customers customized sailings on our Parcel Service. Our agile and sharp team is able to put together sailings with a combination of various kinds of cargoes. We have prolific knowledge and sound experience of carrying various types of containers on our vessels.*

Our team is well versed with requirements for carriage of special containers like IMO DG or reefer containers. Additionally, we are focused on a growing business in the accommodation unit market, these shipments require special attention to details and experience and here our team of Master Mariners bring a strong value addition to the table.





Trucks, Wagons, Cranes and Heavy Lift

- Oil & Gas Equipment, Factories, Structural, Machinery, Equipment
- Trucks, Busses, Earth Moving Equipment, Trains, Wagons
- Yachts, boats, tugs, barges, offshore & fishing vessels
- Wind Energy, Coal & Gas Fired Plants

Heavy lift



Dump trucks



Trucks



Crane part



Oil & Gas – Offshore equipment

Shipping Around The Globe

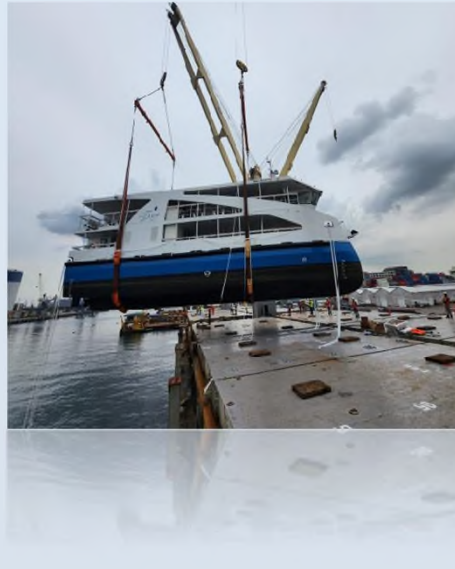
Our Multi-Purpose Vessels are designed to support the movement of many diverse and challenging cargos, including a wide scope of Oil & Gas equipment. The triple decks make them suitable to manage projects that have a high footprint or have limited stacking capabilities.

Our team has years of experience in this field and is able to service our customers high expectation and needs. The non-standardized moves require the highest attention to detail as each unit is different and has its own challenges. Our Port Captains attend not only the loading operation but in fact actually start the operation at the yard of origin, this is to ensure what we have a thorough understanding of the dimensions and structure of each unit and can visualize them in the stow onboard our ship.

Most of our Operations and Commercial staff have sailings experience onboard our ships and are Captains with years of sailing experience. This strong capability is an asset to our business and is something we pride ourselves on.



Yachts and Seacraft



Yachts and Seacraft are unique, high value cargos that require a bespoke service to transport. Regardless of the yacht or seacraft's style or size, **PACC Line's** purpose-built 27,500 DWT Multi-Purpose Vessels are able to provide secure, cost-efficient transportation solutions to our customers. The large, flush stowage surface area of our vessels are able to accommodate such specific stowage requirements with stringent stacking restrictions. This flexibility, combined with the expertise of our dedicated operations team, enable us to perform the safe carriage of high-value goods around the world.



Wood Products

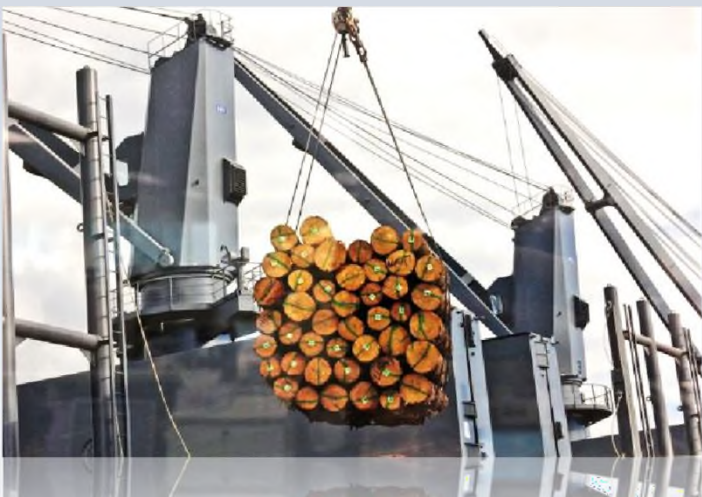
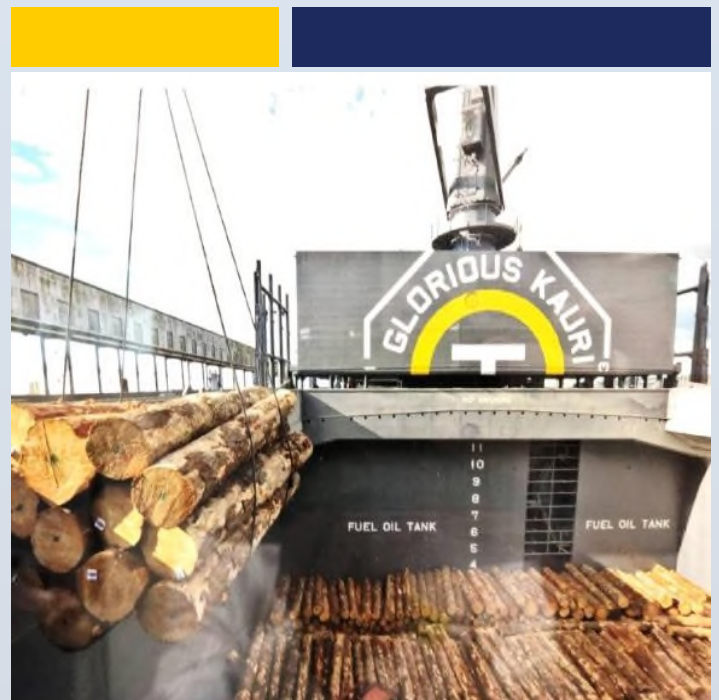


The Carrier of Choice

PCL's exceptional expertise in the logs trade has led us to develop it into one of our regular businesses.

We have serviced key forest owners for numerous years and have developed a high degree of familiarity with the operational requirements that enables us to perform the trade to an exceptional standard required.

Our fleet composes of handy loggers that cater to the various specific needs of individual clients.

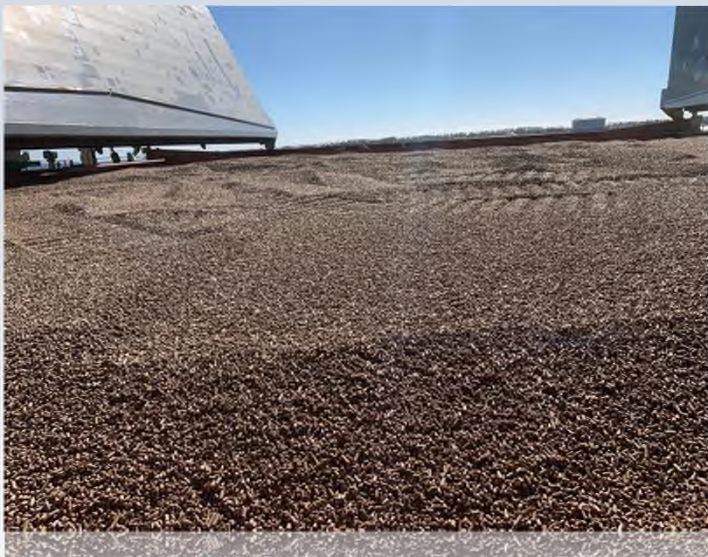


Wood Pellets

Sustainable Energy

PCL's exceptional expertise in safe and smooth operations has won us accolades in this sector and from leaders in this industry.. We are considered early movers into this field of global green energy initiative.

PCL has secured Contracts of Affreightment (COAs) with tenure of 10 & 15 years to carry wood pellets from USA to the European Continent and are fully committed in supporting this drive towards Green and Sustainable Energy.



Gearless Bulk Trade



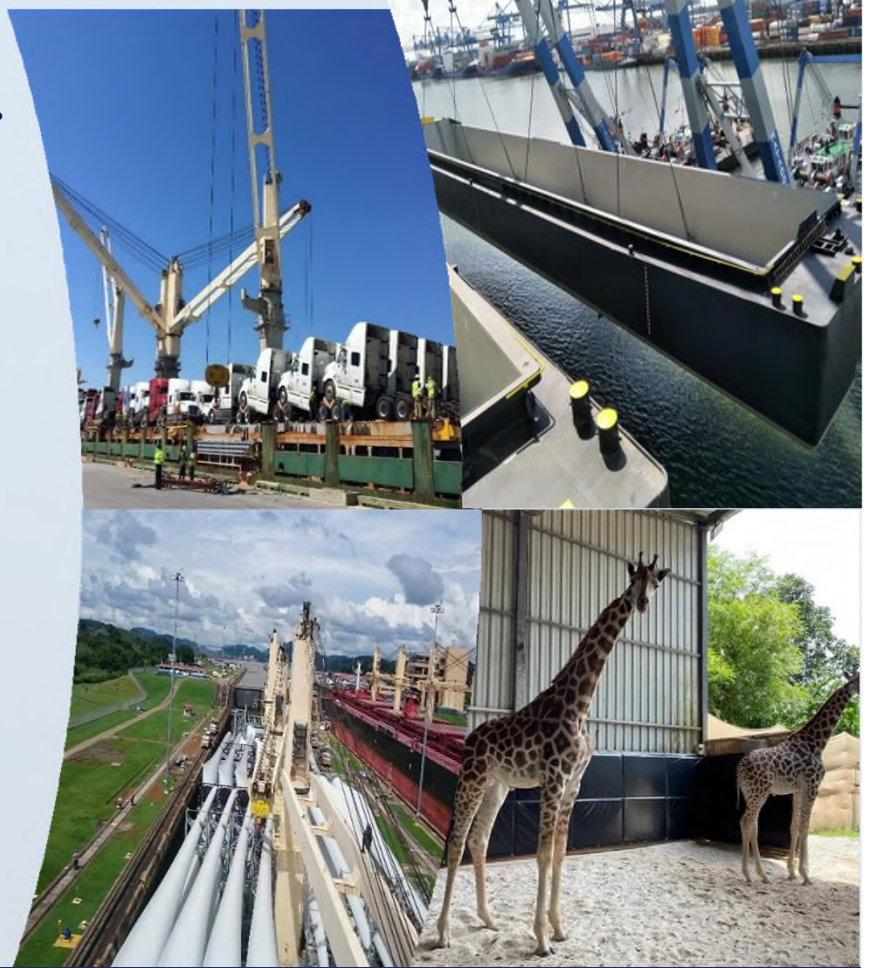
PCL's gearless tonnage caters to industrial clients who require the backing of a reliable service provider that has high safety standards and is also focused on Environmental Sustainability.

We have long term contracts with major consumers in the power sector and have focused on offering them value adds beyond the calling of standard bulk shipments. We value these partnerships and always find ways to bring the width of our organization to the forefront as we manage and execute these commitments.



Special Achievements

- **Wind** – Having carried more than 5,600 blades without an incident, we now have our new record for the longest windmill blade shipped on our vessels at 81.5m.
- **Giraffe's** – Our first animal carriage by **PACC Line**. Two baby Giraffes Adhil & Balaji for Singapore Zoological Gardens. Our group has sponsored these lovely pair of animals for 3 years and named one after our vessel the 'PAC Adhil'.
- **European market** – Increasing our presence in Europe with a monthly service.
- **Barge loading** – Carriage of empty river barges from China to Europe. This was a complex operation and needed detailed engineering calculations to ensure safe carriage.





PACC Line Breakbulk & Heavy Lift (PABX)

bbmkt@pacc.com.sg

Capt. Chaw Mun San **(Singapore)**
Mob: +65 9732 1193

Ms. Nor Umar **(Singapore)**
Mob: +65 9833 6407

Capt Rui Xian **(Singapore)**
Mob: +65 9752 2102

Global Parcel & Project Service (GPPS)

bbchrt@pacc.com.sg

Mr Steffen Zinn **(Germany)**
Mob: +49-151-613 488 31

Mr Vivek Atodaria **(Singapore)**
Mob: +65 9018 2221

Ms Chen Tian **(Beijing)**
Mob: +86 13811084106

Mr Rama Iyer **(Mumbai)**
Mob: +91 9833520976

Mr Erwin Yosuf **(Indonesia)**
Mob: +62 811 878287

Capt Alex Fung **(Singapore)**
Mob: +65 8181 7985

atlantic@pacc.com.sg

Mr Stian Kvig **(USA)**
Mob: +1 6124419347

Capt. Anand Rajaram **(USA)**
Mob: +1 504 417 3394

Ms. Beatriz Sood **(USA)**
Mob: +1 9142241516

Mr Tim Doran **(London)**
Mob: +44 0754 341 6762

Bulk Service

bulk@pacificcarriers.com.sg

Mr Ronald Kuok **(Singapore)**
Mob: +65 8809 2892

Mr Leo Xiang **(Singapore)**
Mob: +65 96569697

Mr Mandar Pitale **(India)**
Mob: +91 7045953494

Tonnage Service

tonnage@pacc.com.sg

Capt. Anand Rajaram **(USA)**
Mob: +1 504 417 3394

Ms. Chen Tian **(China)**
Mob: +86 138 1108 4106

Strategic Initiatives

Chubasco Monteiro **(Singapore)**
Mob: +65 92979089
monteiro@pacc.com.sg



A preferred partner